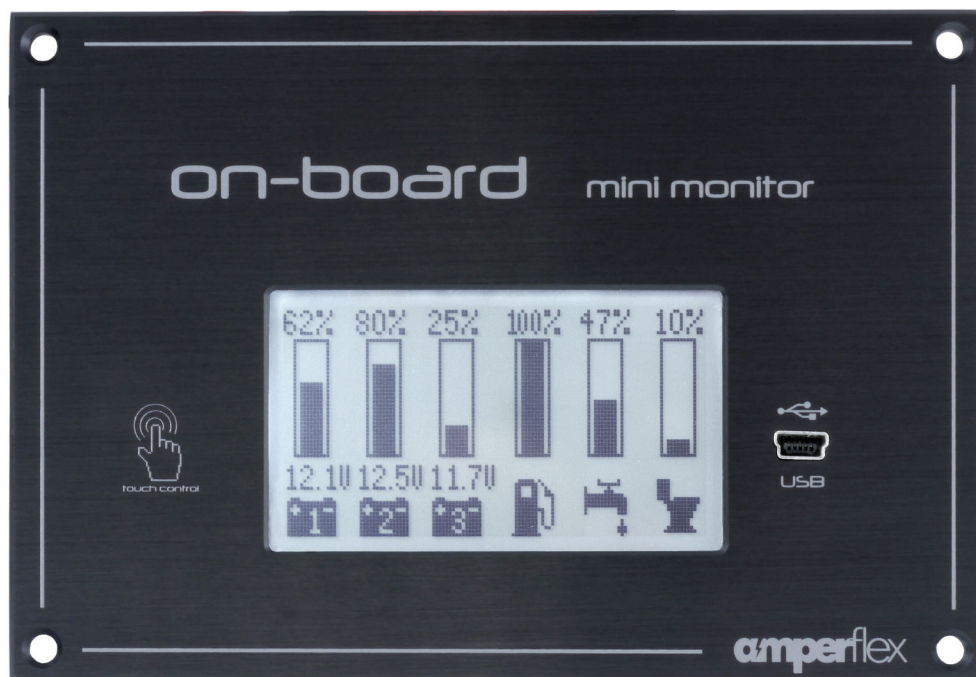


## On-board mini monitor



- + monitors up to 6 batteries or 6 tanks and 2 bilge pumps
- + measures voltage, current and battery capacity
- + calculates the average current and forecast consumption
- + measures the amount of fluid in tanks and forecast empty or full
- + supports chargers aap.tron ACH Series
- + storage of parameters in non-volatile memory
- + mono LCD 2.8" display with touch control
- + outputs for external devices and alarm signals
- + very low current consumption 4mA at 12VDC
- + digital communication with battery shunts and tanks

This is a modern and functional measurement panel, designed to monitor selected parameters on a sailing yacht, motor boat or camping vehicle. The monitor measures and displays working parameters of 6 batteries or 6 tanks and register 2 bilge pumps operation.

Readout values are displayed conveniently on a clear LCD display, and the touch screen enables intuitive operation of the device. The menu is set up with icons for easy handling by an international crew.

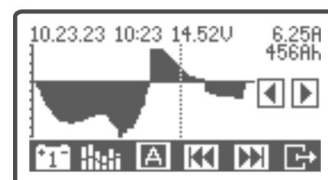
The device measures voltage and current for the individual batteries and uses those measurements to calculate energy consumption in time interval, battery capacity, average current in the last hour and 12 hours. It forecasts the remaining battery time for the current and average load. The specialised 16-bit A/D converters ensure very accurate readouts, for example: the smallest measurement value for a 100A shunt is 3.33 mA. Average voltage, current and battery capacity values are stored in the device memory every 5 or 15 minutes. These stored values can be viewed on the screen in form of a timeline chart. The device uses a non-volatile memory with enough capacity to store the data for over 2 years. On-board Mini Monitor fully supports the ACH series battery chargers. The operating mode and parameters of the battery charger – the voltage and charging current – can be seen on the screen. The following features are also available: change of the operating mode, charging ON/OFF, silent night mode (fan OFF). Advanced charging parameters can be programmed in the service mode.



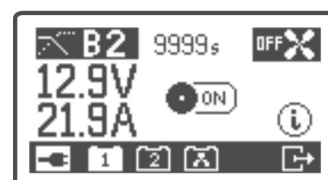
Battery 1 - details



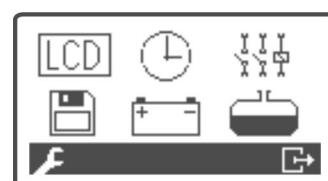
Discharge forecast



Battery 1 - history



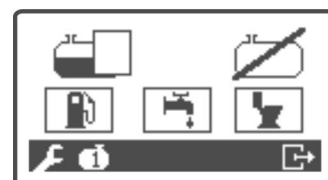
Charger - battery 1



Settings - main menu



Settings - battery 1



Settings - tank 1

## Specification of On-board Mini Monitor

Supply voltage	5-36V DC
Current consumption	4mA at 12V DC (8mA with back-light)
Save memory and RTC	battery backup
Display	mono LCD 128x64 pix.
Control	resistive touch panel
Shunt	100A, 200A, 300A, 500A - Class0.5
Number of batteries	6 battery shunts
Number of tanks	6 tank units
Current measurement resolution	3.33 mA for 100A shunt
Measuring accuracy	0.5% ±1bit
Memory	2MB
Alarms	6 programmable alarms and prealarms
Outputs	4x open collector 500mA - programmable
Inputs	2 digital inputs
Working temperature	-20 to 80 °C
Safety standards	EN 60335-1
Emission / Immunity	EN 61000-6-3 / EN 61000-6-1
Front panel	3mm brushed and black-anodized aluminum
Tightness	IP40
Dimensions	140x96x30 mm

- specifications are subject to change without notice.



Shunt 100A with box



Tank unit TU-01



Shunt's cable

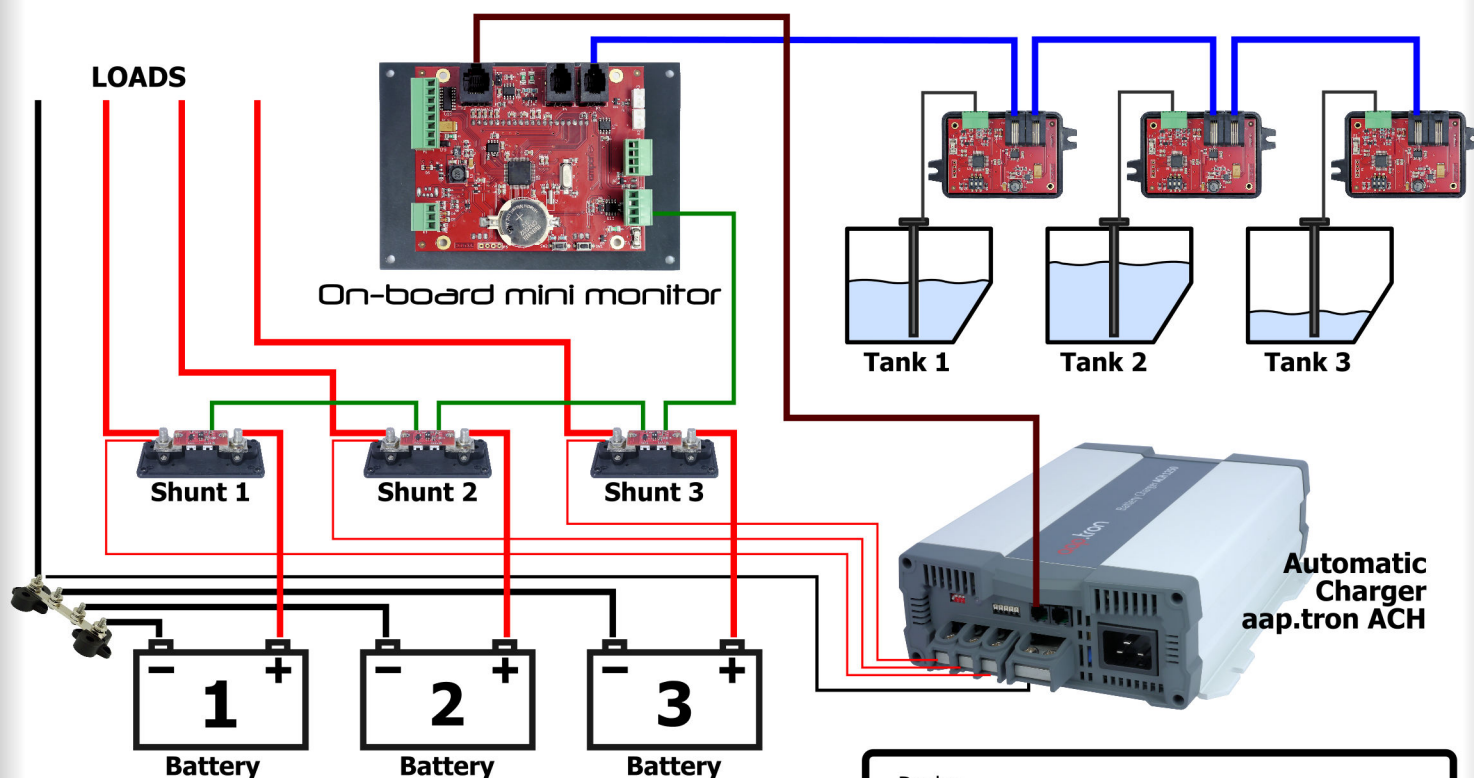


"Rocker"



"Classic"

Distribution panels with automatic breakers



Dealer: