

INDEX
MARINE

Safety electronic systems & waterproof
cable management accessories



2018 CATALOGUE

PRICE LIST



The first choice for waterproof cable routing solutions



LIFECORD®

“ 83% of boat users admitted they had forgotten at some point to connect their kill cord. ”

*A Motor Boat & Yachting magazine – survey

LIFECORD – THE KILL CORD THAT KNOWS WHEN YOU'RE WEARING IT

LIFECORD provides the certainty and reliability of a tethered connection between a boat's engine ignition kill switch and pilot, ensuring the vessels' engine stops should the pilot be inadvertently thrown from the helm. However, unlike the typical passive kill cords commonly seen, LIFECORD is a 'smart' kill cord incorporating detection technology designed to trigger an audible and visual warning alarm should LIFECORD be connected to a boat's kill switch but not the pilot, similar to a seatbelt warning in a car.

LIFECORD's uniquely designed key and clasp connector is comfortable to wear around a leg, and can be operated easily even while wearing gloves. It also offers a secondary method of pilot connection using an ergonomically designed Lifejacket key, which can be permanently fitted to lifejackets. Pilot change and reconnecting LIFECORD couldn't be easier or safer.

- Detects connection to the boat's kill switch and simultaneously senses connection to the pilot.
- Audible and visual warning alarm to indicate that the pilot is not wearing the device.
- Worn around a leg or attached to a lifejacket key.
- Supplied with 7 clip heads ensuring it fits the majority of engine/boat types.

If you and your family get thrown from a moving boat without the kill cord connected, the consequences are potentially disastrous. With no one aboard, the boat has a tendency to circle out of control and at speed, closing in on both the crew in the water and other people or boats nearby, putting lives in grave danger. Such tragedies have been well publicised and are horrific for all concerned.

Do the smart thing, invest in **LIFECORD!**



RRP Ex VAT	REF	DESCRIPTION
£74.96	IM2300	LIFECORD - The smart Kill Cord

Designed and manufactured in Great Britain.

LIFECORD'S manufacturer operates under quality procedures complying with BS EN ISO 9001:2008 and is manufactured to IP67 rating.



Harnessing Safety Through Technology

“ LIFECORD incorporates unique sensor and tension-sensing technology, detecting connection to the boat's kill switch and simultaneously senses connection to the pilot. Astute design that makes LIFECORD one of the best kill cords in the marketplace ensuring the safety of the pilot and crew is forefront ”

Chris Fearnley – Technical Director, Index Marine.

WATERPROOF & DUSTPROOF CABLE MANAGEMENT ACCESSORIES

Ideal for routing electrical applications and ducting through bulkheads, decks and panels. Suited to Marine and other demanding environments.

- IP68 rated – watertight installation.
- Attractive low profile shaped glands available in both straight-through and right-angled versions.
- 10 size variants catering for single and multiple cable applications.
- Available with either pre-drilled or blank self-drill centre bung.
- DG series do not require the removal of fitted connectors when installing.
- Aesthetic options.
 - Premium Range: Stainless Steel, Aluminium, UV-Stable White and Grey Plastic.
 - Value Range: Black Plastic.
- Easy to install with clear instructions.



IP68 SE SERIES RIGHT-ANGLED CABLE GLAND

Value Range

RRP Ex VAT	REF	MAX CABLE SIZE	FINISH	FEATURES	DIMENSIONS L x W x H mm
£4.99	SE1B	7 mm	Black Plastic	3 preformed bungs included for pass-through cable sizes 2-7 mm - single cable.	55 x 42 x 16
£7.49	SE1	7 mm	Grey Plastic		
£8.32	SE1W	7 mm	White Plastic		



SE1B

RRP Ex VAT	REF	MAX CABLE SIZE	FINISH	FEATURES	DIMENSIONS L x W x H mm
£8.74	SE5B	9 mm	Black Plastic	3 preformed bungs included for pass-through cable sizes 7-9 mm - single cable.	82 x 62 x 24
£12.49	SE5	9 mm	Grey Plastic		
£13.32	SE5W	9 mm	White Plastic		



SE5W

RRP Ex VAT	REF	MAX CABLE SIZE	FINISH	FEATURES	DIMENSIONS L x W x H mm
£8.74	SE6B	12 mm	Black Plastic	3 preformed bungs included for pass-through cable sizes 10-12 mm - single cable.	82 x 62 x 24
£12.49	SE6	12 mm	Grey Plastic		
£13.32	SE6W	12 mm	White Plastic		



SE6B

RRP Ex VAT	REF	MAX CABLE SIZE	FINISH	FEATURES	DIMENSIONS L x W x H mm
£8.74	SE7B	6 mm	Black Plastic	Twin cable pass-through 2 preformed bungs included for pass-through cable sizes 2 x 3-6 mm.	82 x 62 x 24
£12.49	SE7	6 mm	Grey Plastic		
£13.32	SE7W	6 mm	White Plastic		



SE7

IP68 DR SERIES - MULTI-CABLE, INSTALLER-CONFIGURABLE

RRP Ex VAT	REF	MAX CABLE SIZE	FINISH	FEATURES	DIMENSIONS L x W x H mm
£25.82	DR1	10 mm	Stainless Steel	User drills cable holes - allows multiple cables of different sizes to pass through. Allows connectors up to 18 mm to pass through before cable is sealed.	94 x 44 x 23



DR1

IP68 DG SERIES DECK/CABLE GLANDS

RRP Ex VAT	REF	MAX CABLE SIZE	FINISH	FEATURES	DIMENSIONS Dia x H mm
£4.57	DG8PB	8 mm	Black Plastic	3 preformed bungs included for pass-through cable sizes 2-8 mm.	35 x 11
£6.24	DG8P	8 mm	Grey Plastic		
£7.07	DG8PW	8 mm	White Plastic		
£13.13	DG8A	8 mm	Aluminium		
£23.33	DG8S	8 mm	Stainless Steel		



DG8S

RRP Ex VAT	REF	MAX CABLE SIZE	FINISH	FEATURES	DIMENSIONS Dia x H mm
£7.91	DG20PB	14 mm	Black Plastic	User drills cable holes - allows multiple cables of different sizes to pass through. Allows connector up to 21 mm to pass through before cable is sealed. Drill holes must be a min of 8 mm from the edge of the bung and 6 mm from other drill holes.	49 x 19
£11.66	DG20P	14 mm	Grey Plastic		
£12.49	DG20PW	14 mm	White Plastic		
£20.82	DG20A	14 mm	Aluminium		
£28.74	DG20S	14 mm	Stainless Steel		
£9.57	DG21PB	9 mm	Black Plastic	3 preformed bungs included for pass-through cable sizes 4.5-9 mm. (No drilling required). Allows connector up to 21 mm to pass through before cable is sealed.	49 x 19
£13.32	DG21P	9 mm	Grey Plastic		
£14.16	DG21PW	9 mm	White Plastic		
£23.32	DG21A	9 mm	Aluminium		
£31.24	DG21S	9 mm	Stainless Steel		
£9.57	DG22PB	14 mm	Black Plastic	3 preformed bungs included for pass-through cable sizes 9-14 mm. (No drilling required). Allows connector up to 21 mm to pass through before cable is sealed.	49 x 19
£13.32	DG22P	14 mm	Grey Plastic		
£14.57	DG22PW	14 mm	White Plastic		
£23.32	DG22A	14 mm	Aluminium		
£31.24	DG22S	14 mm	Stainless Steel		



DG20P



DG21A

RRP Ex VAT	REF	MAX CABLE SIZE	FINISH	FEATURES	DIMENSIONS Dia x H mm
£9.57	DG30PB	25 mm	Black Plastic	User drills cable holes - allows multiple cables of different sizes to pass through. Allows connector up to 30 mm to pass through before cable is sealed. Drill holes must be a min of 8 mm from the edge of the bung and 6 mm from other drill holes.	60 x 19
£13.74	DG30P	25 mm	Grey Plastic		
£14.58	DG30PW	25 mm	White Plastic		
£24.57	DG30A	25 mm	Aluminium		
£34.57	DG30S	25 mm	Stainless Steel		



DG30PW

RRP Ex VAT	REF	MAX CABLE SIZE	FINISH	FEATURES	DIMENSIONS Dia x H mm
£10.41	DG40PB	36 mm	Black Plastic	User drills cable holes - allows multiple cables of different sizes to pass through. Allows connector up to 40 mm to pass through before cable is sealed. Drill holes must be a min of 8 mm from the edge of the bung and 6 mm from other drill holes.	70 x 19
£14.99	DG40P	36 mm	Grey Plastic		
£16.24	DG40PW	36 mm	White Plastic		
£28.74	DG40A	36 mm	Aluminium		
£38.33	DG40S	36 mm	Stainless Steel		
£10.41	DG45PB	15 mm	Black Plastic	1 preformed bung included for pass-through cable sizes 12-15 mm. Allows connector up to 40 mm to pass through before cable is sealed.	70 x 19
£14.99	DG45P	15 mm	Grey Plastic		
£16.24	DG45PW	15 mm	White Plastic		
£28.74	DG45A	15 mm	Aluminium		
£38.33	DG45S	15 mm	Stainless Steel		



DG40PB

RRP Ex VAT	REF	MAX CABLE SIZE	FINISH	FEATURES	DIMENSIONS Dia x H mm
£44.16	DG50A	47 mm	Aluminium	User drills cable holes - allows multiple cables of different sizes to pass through. Allows connector up to 50 mm to pass through before cable is sealed. Drill holes must be a min of 8 mm from the edge of the bung and 6 mm from other drill holes.	84 x 23
£59.99	DG50S	47 mm	Stainless Steel		



DG50S

GRAFTER™ WATERPROOF & DUSTPROOF PLUGS & SOCKETS

The Grafter™ range of environmentally rated sealed circular connectors, plugs and sockets are designed to deliver safe, secure and reliable connections for harsh environment applications.

- IP68 rated – Watertight installation.
- Optional in-line or bulkhead mounting variants.
- Cable seal options for different diameter cables.
- Kits for popular combinations.

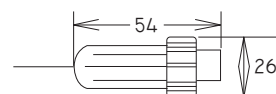


IP68 GRAFTER™ CONNECTOR SERIES

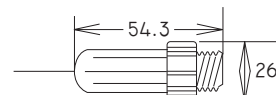
Value
Range

RRP Ex VAT	REF	DESCRIPTION	FITTED	RATING	DIMENSIONS L x Dia mm
£6.24	IM22AM02PL	2-Pin in-line connector. Solder cable connection.	Male	250V 12A	54 x 26
£7.91	IM22PF02F	2-Pin panel-mount socket with protective cap. Solder cable connection.	Female	250V 12A	24 x 31
£7.91	IM22AF02PL	2-Pin in-line connector. Solder cable connection.	Female	250V 12A	54.3 x 26
£7.07	IM22AM03PL	3-Pin in-line connector. Solder cable connection.	Male	250V 12A	54 x 26
£9.16	IM22PF03F	3-Pin panel-mount socket with protective cap. Solder cable connection.	Female	250V 12A	24 x 31
£9.16	IM22AF03PL	3-Pin in-line connector. Solder cable connection.	Female	250V 12A	54.3 x 26
£7.99	IM22AM04PL	4-Pin in-line connector. Solder cable connection.	Male	250V 12A	54 x 26
£9.99	IM22PF04F	4-Pin panel-mount socket with protective cap. Solder cable connection.	Female	250V 12A	24 x 31
£9.99	IM22AF04PL	4-Pin in-line connector. Solder cable connection.	Female	250V 12A	54.3 x 26
£7.91	IM22AM05PL	5-Pin in-line connector. Solder cable connection.	Male	250V 12A	54 x 26
£9.99	IM22PF05F	5-Pin panel-mount socket with protective cap. Solder cable connection.	Female	250V 12A	24 x 31
£9.99	IM22AF05PL	5-Pin in-line connector. Solder cable connection.	Female	250V 12A	54.3 x 26
£8.74	IM22AM06PL	6-Pin in-line connector. Solder cable connection.	Male	250V 12A	54 x 26
£12.91	IM22PF06F	6-Pin panel-mount socket with protective cap. Solder cable connection	Female	250V 12A	24 x 31
£11.24	IM22AF06PL	6-Pin in-line connector. Solder cable connection.	Female	250V 12A	54.3 x 26

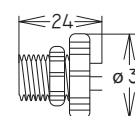
Male in-line



Female in-line



Panel-mount socket



IM22AM02PL



IM22PF02F



IM22AF02PL



£4.99	IM22PCFA	Protective cap Male (Aluminium)	-	-	13 x 26
£1.33	IM22PCMP	Protective cap Male (Plastic)	-	-	13 x 26

IP68 GRAFTER PLUG & SOCKET KITS

Value
Range

RRP Ex VAT	REF	DESCRIPTION	FITTED	RATING
£13.74	IMKIT2IL	2-Pin in-line pair. Solder cable connection.	Male/Female	250V 12A
£13.74	IMKIT2PS	2-Pin plug/socket pair (inc. protective cap for socket). Solder cable connection.	Male/Female	250V 12A
£15.82	IMKIT3IL	3-Pin in-line pair. Solder cable connection.	Male/Female	250V 12A
£15.82	IMKIT3PS	3-Pin plug/socket pair (inc. protective cap for socket). Solder cable connection.	Male/Female	250V 12A
£17.49	IMKIT4IL	4-Pin in-line pair. Solder cable connection.	Male/Female	250V 12A
£17.49	IMKIT4PS	4-Pin plug/socket pair (inc. protective cap for socket). Solder cable connection.	Male/Female	250V 12A
£17.91	IMKIT5IL	5-Pin in-line pair. Solder cable connection.	Male/Female	250V 12A
£17.91	IMKIT5PS	5-Pin plug/socket pair (inc. protective cap for socket). Solder cable connection.	Male/Female	250V 12A
£19.99	IMKIT6IL	6-Pin in-line pair. Solder cable connection.	Male/Female	250V 12A
£20.82	IMKIT6PS	6-Pin plug/socket pair (inc. protective cap for socket). Solder cable connection.	Male/Female	250V 12A



IMKIT2PS

IP68 BULGIN BUCCANEER SERIES

Quality plugs and sockets manufactured in glass filled nylon to military specification designed to provide secure, robust and watertight connection in heavy duty, industrial and harsh environment applications.

- IP68 rated – Watertight installation.
- Optional pin variations.
- Available in either in-line pair or low-flange socket and plug.



IMDP2

RRP Ex VAT	REF	DESCRIPTION	RATING	CABLE SIZE	DIMENSIONS mm
£22.32	DP2	2-Pin plug with low-flange socket and caps kit. Screw connection. Supplied with stainless steel fixing screws.	277V 12A	3.5 - 9	Plug L 69 x Dia 38 Socket L 44.5 x W 44.5 x D 27
£24.10	DP2I/L	2-Pin plug and in-line socket with caps kit. Screw connection.	277V 12A	3.5 - 9	Plug L 69 x Dia 38 Socket L 65 x Dia 38
£22.88	DP3	3-Pin plug with low-flange socket and caps kit. Screw connection. Supplied with stainless steel fixing screws.	277V 12A	3.5 - 9	Plug L 69 x Dia 38 Socket L 44.5 x W 44.5 x D 27
£25.17	DP3I/L	3-Pin plug and in-line socket with caps kit. Screw connection.	277V 12A	3.5 - 9	Plug L 69 x Dia 38 Socket L 65 x Dia 38
£25.56	DP6	6-Pin plug with low-flange socket and caps kit. Screw connection. Supplied with stainless steel fixing screws.	277V 5A	3.5 - 9	Plug L 69 x Dia 38 Socket L 44.5 x W 44.5 x D 27
£27.09	DP6I/L	6-Pin plug and in-line socket with caps kit. Screw connection.	277V 5A	3.5 - 9	Plug L 69 x Dia 38 Socket L 65 x Dia 38

UNITE™ WATERPROOF & DUSTPROOF CONNECTORS

The Unite™ range of screw terminal block and cable gland connectors are incredibly easy to install and are ideal for straightforward cable connecting or routing through panels for Marine or harsh environment applications. The connectors are manufactured with an eco-friendly housing material with copper inner conductors that ensure high temperature resistance.

- IP68 rated – Watertight installation.
- Optional pin variations.
- Cable seal options for different diameter cables.



IM682-A4

IP68 UNITE™ CONNECTOR SERIES

Value
Range

RRP Ex VAT	REF	DESCRIPTION	FITTED	CABLE SIZE mm	DIMENSIONS L x Dia mm
£3.07	IM682-A2	2-Pin screw terminal block with M20 cable gland.	450V 16A	2 sized rubber bungs provided 5-9, 9-12	76 x 27
£3.41	IM682-A3	3-Pin screw terminal block with M20 cable gland.	450V 16A	2 sized rubber bungs provided 5-9, 9-12	76 x 27
£3.91	IM682-A4	4 -Pin screw terminal block with M20 cable gland.	450V 16A	2 sized rubber bungs provided 5-9, 9-12	76 x 27



IM682-A2

IP68 UNITE™ 1 INPUT – 2 OUTPUT CONNECTOR

RRP Ex VAT	REF	DESCRIPTION	FITTED	CABLE SIZE mm	DIMENSIONS L x Dia mm
£3.32	IM684-C2	2-Pin 1 input - 2 output. Screw terminal block with M20 cable gland.	450V 16A	2 sized rubber bungs provided 5-9, 9-12	76 x 27



IM684-C2

IP68 UNITE™ MULTI-PACKS

RRP Ex VAT	REF	DESCRIPTION	RATING	CABLE SIZE mm	DIMENSIONS L x Dia mm
£9.08	IM682-A234-3	2/3/4-Pin triple pack screw terminal block with M20 cable gland.	450V 16A	2 sized rubber bungs provided 5-9, 9-12 (for each connector).	76 x 27
£5.40	IM682-A2-2	2-Pin twin pack screw terminal block with M20 cable gland.	450V 16A	2 sized rubber bungs provided 5-9, 9-12 (for each connector).	76 x 27
£6.49	IM682-A3-2	3-Pin twin pack screw terminal block with M20 cable gland.	450V 16A	2 sized rubber bungs provided 5-9, 9-12 (for each connector).	76 x 27
£5.82	IM684-C2-2	2-Pin 1 input - 2 output twin pack screw terminal block with M20 cable gland.	450V 16A	2 sized rubber bungs provided 5-9, 9-12 (for each connector).	76 x 27



IM682-A234-3

WATERPROOF & DUSTPROOF ELECTRICAL JUNCTION BOXES

Environmentally rated electrical junction boxes and accessories that are specifically designed and manufactured for straight forward neat installation.

- Fully waterproof to IP67 – upgrade to IP68 with gel insert.
- Easy to use, quick to install.
- Flexible port selection - open the ports required and fit the supplied glands ensuring waterproof integrity.
- Kits contain all necessary items – waterproof enclosure, waterproof cable glands and connector block with mounts.



IMKIT2IL

JUNCTION BOX KITS

RRP Ex VAT	REF	DESCRIPTION	FLEXIBLE PORT OPTION	CABLE SIZE mm	L x W x H x INNER HEIGHT
£15.82	IMJBCSK	Small cable splicer kit: IP67 rated enclosure 6-way connector block	2	4-9	65 x 94 x 57 x 45
£17.07	IMJBSK	Small box kit: IP67 rated enclosure. 6 cable glands 6-way connector block	6	4-9	65 x 94 x 57 x 45
£22.07	IMJBMK	Medium box kit: IP67 rated enclosure. 10 cable glands 12- way connector block	10	4-9	94 x 130 x 57 x 45
£27.91	IMJBLK	Large box kit: IP67 rated enclosure. 14 cable glands 12-way connector block	14	4-9	94 x 180 x 57 x 45
£39.16	IMJBMEBK	Earth busbar box kit: IP67 rated enclosure 10 cable glands. 13-way busbar	10	4-9	94 x 130 x 57 x 45

JUNCTION BOXES

RRP Ex VAT	REF	DESCRIPTION	FLEXIBLE PORT OPTION	L x W x H x INNER HEIGHT
£12.91	IMJBS	Small box	6	65 x 94 x 57 x 45
£17.49	IMJBM	Medium box	10	94 x 130 x 57 x 45
£22.49	IMJBL	Large box	14	94 x 180 x 57 x 45



IMJBS

JUNCTION BOX GLANDS

RRP Ex VAT	REF	DESCRIPTION	CABLE SIZE
£0.49	IMKS	Klikseal M20 grommet/gland	4-11 mm
£0.99	IMCG16	M16 Screw-in gland & nut	4.5-10 mm
£1.49	IMCG20	M20 Screw-in gland & nut	6-13 mm



IMKS

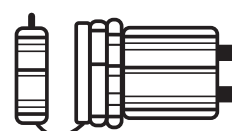
USB Panel Mount Socket

USB POWER OUTLET & SUPPLY

Dual waterproof and dustproof USB panel mounted socket and USB power supply with tethered protective cap offers IP68 environmental protection when cap is in place. Ideally suited to the traditional marine market as well as leisure and utility vehicle applications and general-purpose connectivity applications to charge phones, tablets and other electrical equipment with 1x1A outlet and 1x2.1A outlet.



RRP Ex VAT	REF	DESCRIPTION	DIMENSIONS L x Dia mm
£29.00	IMBE900	Waterproof USB 2.0 – Panel mount socket and USB power supply with tethered protective cap.	45 x 37



GALVANIC ISOLATORS

The IM2160 range of galvanic isolators are essential in preventing earthing problems and aid in the prevention of galvanic and stray electrical currents, which can cause devastating corrosive damage to your vessel.

INDEX MARINE'S GALVANIC ISOLATORS ARE **SAFE**

- Simple to install.
- Allows RCDs and circuit breakers to operate safely.
- Fault/Status Indicator compatible.
- Essential when connected to shore power.



RRP Ex VAT	REF	DESCRIPTION	SUPPLY	DIMENSIONS L x W x D mm
£60.00	IM2160A16	Galvanic isolator - IP68 rated enclosure	Max 16A	120 x 77 x 83
£70.00	IM2160A32	Galvanic isolator - IP68 rated enclosure	Max 32A	144 x 77 x 83
£120.00	IM2160A70	Galvanic isolator - IP68 rated enclosure	Max 70A	194 x 77 x 83

ELECTRICAL STATUS/FAULT INDICATOR

Provides a monitoring LED light panel, two white LED lights indicates no fault. Red LED lights indicate problems with the vessels' earthing system and shows any AC or DC fault conditions alerting you to shut down electrics immediately and seek a professional electrician for advice.



RRP Ex VAT	REF	DESCRIPTION	DIMENSIONS L x W x D mm
£19.00	IM2200	Electrical status /fault indicator - IP68 rated enclosure For use with the IM2160 galvanic isolator range	60 x 35 x 20

Water Ingress/Bilge Alarms

WATER INGRESS/FLOOD DETECTION & ALARM

IMBE20 level alarm unit that can independently monitor liquids to either high or low levels and has two channels with audio alarm and independent annunciator lights. Compatible with Index Marine's IMBE55 resistive or IMBE51 optical fluid sensors as well as many other third-party sensor types. Ideal for monitoring bilge and compartment levels, holding tanks, as well as domestic and commercial flood and water ingress observation. Panel mount with simple terminal block connections make for easy installation.



RRP Ex VAT	REF	DESCRIPTION	DIMENSIONS L x W x D mm
£149.00	IMBE20	Water ingress two channel alarm panel	100 x 70 x 40

FOUR STATION BILGE ALARM

The 4 station bilge alarm system comprises of a control panel fitted with LED lights for flood warning and "Power ON", a 90 dB siren, push button switchable - "Power ON / OFF" and alarm silence. The IMBE15 alarm system monitors fluid levels in up to four areas simultaneously and is packaged as a sealed unit that is easy to install. A suitable solution for working, military and special use boats used in harsh environments to alert crew to the presence of water in the boats bilges.

Compatible with Index Marine's IMBE55 resistive or IMBE51 optical fluid sensors as well as many other third-party sensor types.



RRP Ex VAT	REF	DESCRIPTION	DIMENSIONS L x W x H mm
£269.00	IMBE15	Four station bilge alarm	130 x 130 x 75



IMBE55

RESISTIVE SENSOR

Designed with no moving parts (unlike float switches) to detect liquid levels ideal for fluid monitoring. Compatible with all Index Marine and third party alarm panel products.

The resistive fluid sensor fitted with two small probes which allows very low voltage and extremely low amperage to pass between them when immersed in fluid. When detection circuitry is triggered by the presence of fluid, a signal is sent to the control panel. Supplied with a 10m, lead and is ideal for marine applications, flood detection, control and defence in domestic, industrial or infrastructure environments.



IMBE51

OPTICAL SENSOR

Designed with no moving parts (unlike float switches) to detect liquid levels ideal for fluid monitoring. Compatible with all Index Marine and third party alarm panel products.

An optical fluid sensor which uses light refraction to detect fluids. When detection circuitry is triggered by the presence of fluid, a signal is sent to the control panel. Supplied with a 10m, lead and is ideal for marine applications, flood detection, control and defence in domestic, industrial or infrastructure environments.

RRP Ex VAT	REF	DESCRIPTION	DIMENSIONS L x Dia mm
£45.00	IMBE55	Resistive water-level sensor General purpose sensor. Includes 10m cable	50 x 20
£119.00	IMBE51	Optical water-level sensor High performance sensor – no exposed metallic parts (for use where flammable liquids or volatile vapours may be present). Includes 10m cable	50 x 20

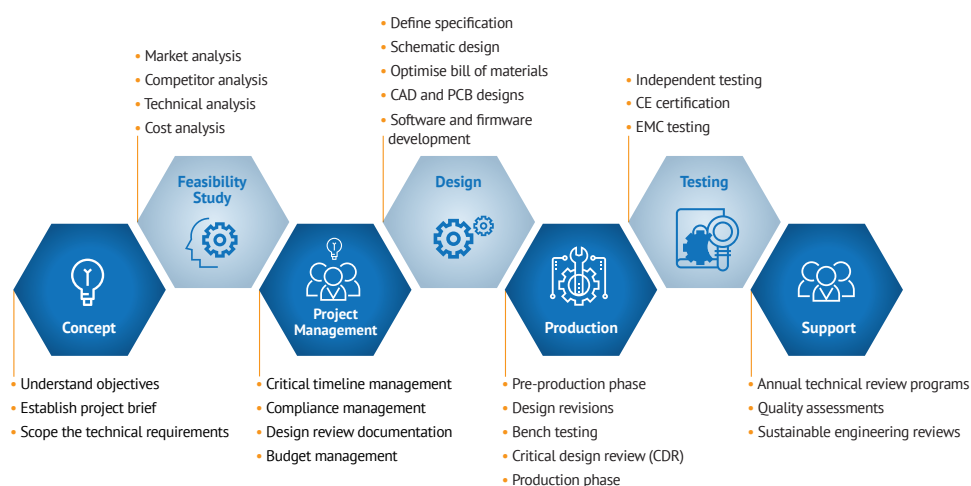
Bespoke Electronic Engineering Services

INDEX INNOVATION TEAM

The Index Innovation Team is the core dedicated electronic engineers that have collectively developed Index Marine's leading safety electronic ranges. Formed with a cherry picked team of highly experienced engineers with specialism in various disciplines, the team has grown into a recognised division that not only drives Index Marines product development but also markets it's services to both the Marine and Safety Industry.

DO YOU HAVE A PROJECT THAT REQUIRES ELECTRONIC EXPERTISE?

We provide electronic design and manufacturing services for every stage of your project. We understand that not every one requires the complete turnkey solution, and that project structures can involve various stakeholders and third parties. Therefore, we have developed a flexible approach to our service offering where we can provide expertise at any of the key stages to support your project, or help with the entire project life-cycle.



SPEAK TO OUR TECHNICAL DIRECTOR

Whether you have a concept you would like to develop, or you're midway through the development process and need technical assistance, we can provide a tailored service to support your requirements and help you get to where you need to be.

Call **01305 849 405** and speak to Chris Fearnley, Technical Director to establish how we can help.

What makes Index Marine different?



Index Marine

With over 30 years of experience Index Marine has become a leading supplier of safety electronic systems and waterproof cable management accessories to both the international boating community and the marine industry. We proudly design, develop and manufacture products in the United Kingdom, which are sold worldwide to a wide range of customers. All products meet exacting performance specifications and are specifically designed to withstand harsh environment conditions, both on water and land.

Solution Driven

Our aim is to provide customers with a greater flexibility of choice and deliver cost-effective solutions to their application needs. All products are designed and developed to high quality standards focusing on safety, security and reliability.

Engineering Innovation

Our dedicated engineering innovation team is focused to develop products that are responsive to market demands especially when required by safety legislation. Product development is application-driven but also ensures space-saving design, simplification of installation and optimisation of the user experience.

Integrity & Reassurance

Our quality management system ensures that we continually deliver competent design, high quality manufacturing, operate efficiently and support continuous improvement. This enables us to exceed customer expectations that ensure customer satisfaction.

Approved & Trusted

All Index Marine electrical products display the appropriate CE Mark, hence conforming to the relevant European Union Standards.

Worldwide Support

Index Marine customers have global support via an international network of distributors. Our support network will resolve any issues that may arise with supply, technical support and installation questions.

Customer Service

We aim to support our customers when choosing the right product and installing it correctly. Our website not only features our entire product range but also provides product specifications and installation information. If you have a particular question regarding our products or installation send an email to: enquiries@indexmarine.com.

Bulk Ordering for OEMs

It's extremely easy for OEMs* to place an order, simply email your requirements quoting the item reference code and quantity to:

sales@indexmarine.com

All emailed orders will be confirmed with expected delivery dates by email.

Free delivery on: UK orders above **£350**.

EU orders over **£600**, rest of the world over **£1000**.

*OEMs are required to make payment in full prior to shipment of orders. Business accounts can be applied for regular ordering - 30 day payment terms subject to standard credit checks.

INDEX
MARINE

Headquarters, design & manufacturing facility
Unit 42, Enterprise Park, Piddlehinton
Dorset, DT2 7UA UK **t** +44(0)1305 849 405
w www.indexmarine.com **e** enquiries@indexmarine.com