



SmartPlug Products

16^{AMP}
230V

&

32^{AMP}
230V

SAFE - ELIMINATES OVERHEATING

- 20x more electrical contact area than the twist-type connector
- Multi-point Locking System - Side Levers & Cover Lock
- Solid Sleeve Connection - Eliminates Pressure on Pins/Clips
- Triple Weatherproof Seals

EASY TO USE

- No L-Shaped Pin - Easy to Use at Night
- Plugs Straight In - No Twisting Required
- No misalignment issues
- No cross threading problems

16AMP CONNECTOR & INLET

Our Non-Metallic Inlets offer the same high-quality electrical components as our award winning stainless steel products.

WEATHERPROOF

Face gasket seals against inlet sleeve to eliminate dirt & moisture exposure on electrical pins.

LOCKING FEATURE

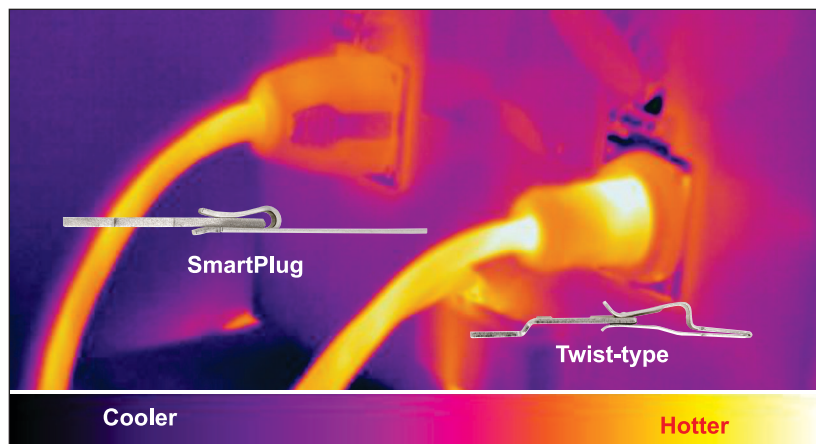
Spring loaded side levers automatically lock into sides of inlet housing

RETRO-FIT CORD SEAL

Use your existing cord

CONNECTOR BODY SHAPE

Sleeve design fits snugly within inlet, removing all tension from the electrical connection



LOCKING FEATURE

Inlet cover snaps into slots of inlet housing

WEATHERPROOF

Face gasket creates a seal when closed

POWER INDICATOR LENS

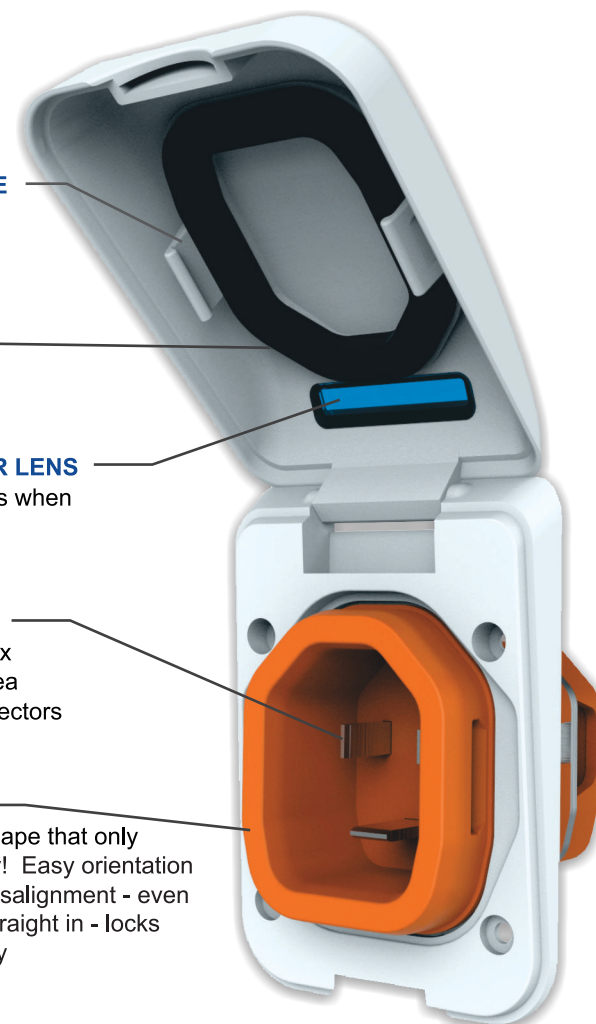
Clear lens illuminates when cordset is powered

ELECTRICAL PINS

Straight pins with 20x electrical contact area than twist type connectors

EASE OF USE

Unique plug body shape that only goes in the right way! Easy orientation with no chance of misalignment - even in the dark! Plugs straight in - locks & seals automatically





SmartPlug Products

16^{AMP}
230V

&

32^{AMP}
230V



16 AMP INLET & CONNECTOR



32 AMP INLET & CONNECTOR



WEATHERCAP W/ LANYARD
Works with 16 & 32 amp plugs

16 & 32 AMP STAINLESS & NON-METALLIC INLETS



- White, Gray & Black
- Contemporary design
- Hidden fixings

16 AMP 230V



- 316 Stainless



- White, Gray & Black
- Contemporary design
- Hidden fixings

32 AMP 230V



- 316 Stainless

16A CORDSET - 7.62m & 15.24m

NO ADAPTORS NEEDED

This cordset was designed to protect the boat side connection. The marina connection stays the same.

WEATHERPROOF

There are multi-fin silicone gaskets located in the cordset connector and the inlet for double protection against moisture intrusion.

EASY-TO-USE - SLEEVED DESIGN

The sleeved design eliminates weight and tension on the electrical pins and clips to maximize the metal-to-metal surface contact. Just push the connector onto the straight pins in the inlet until the side levers "click". No twisting required!

POWER-ON INDICATOR LIGHT

A blue LED mounted on top of the connector illuminates when the cordset is transferring power.

MULTI-POINT LOCKING SYSTEM

Locking side levers on the connector combined with with the inlet locking cap ensures a rock solid connection.

